

Pearmtree Hill Solar Farm

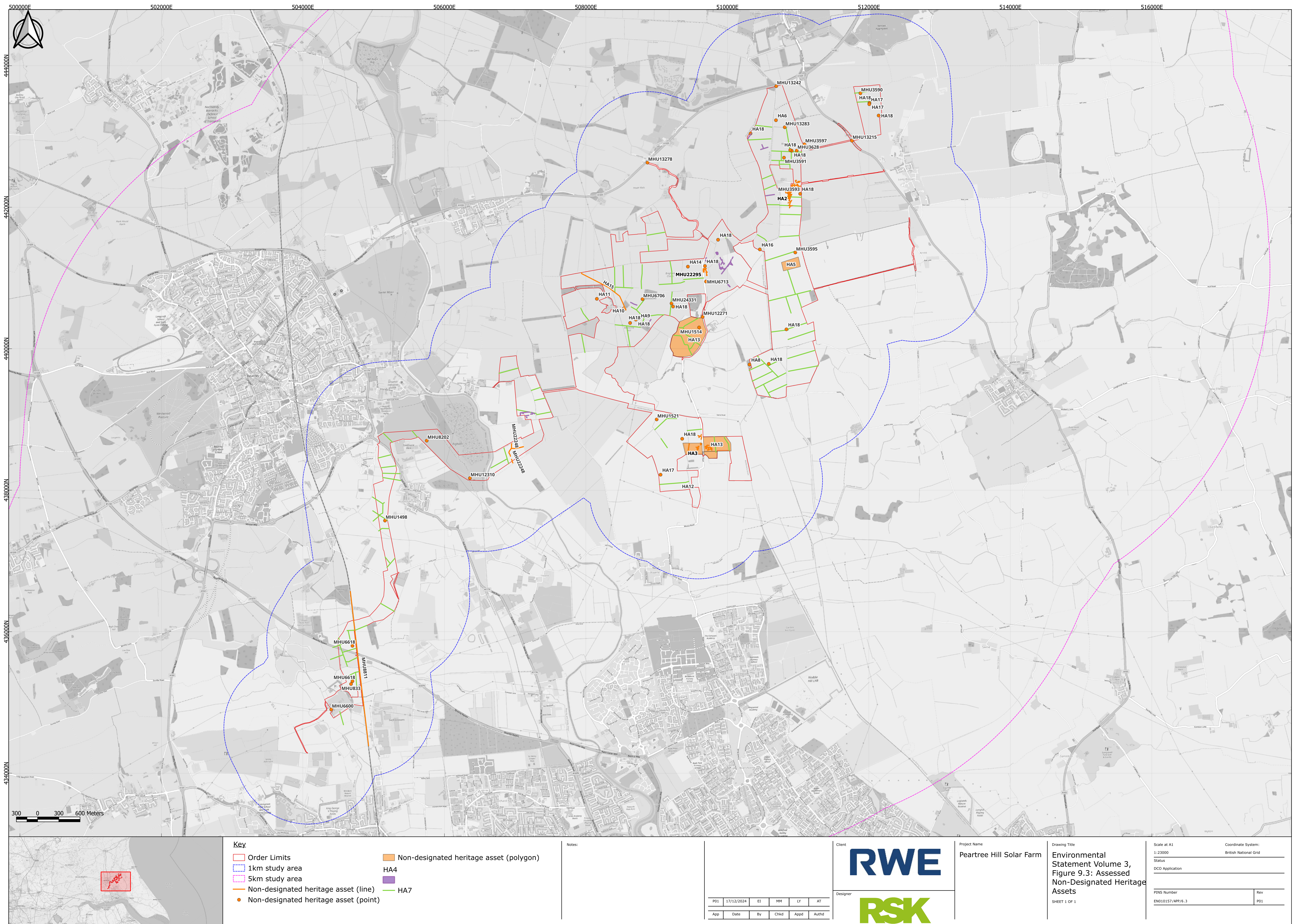
Environmental Statement

Volume 3

Figure 9.3: Assessed Non-Designated Heritage Assets

Application Document Ref: EN010157/APP/6.3
February 2025

Planning Act 2008
Infrastructure Planning
(Applications: Prescribed Forms
and Procedure) Regulations 2009 –
Regulation 5(2)(a)



RWE Renewables UK Limited

Windmill Hill Business Park,
Whitehill Way,
Swindon,
Wiltshire,
England,
SN5 6PB
www.rwe.com